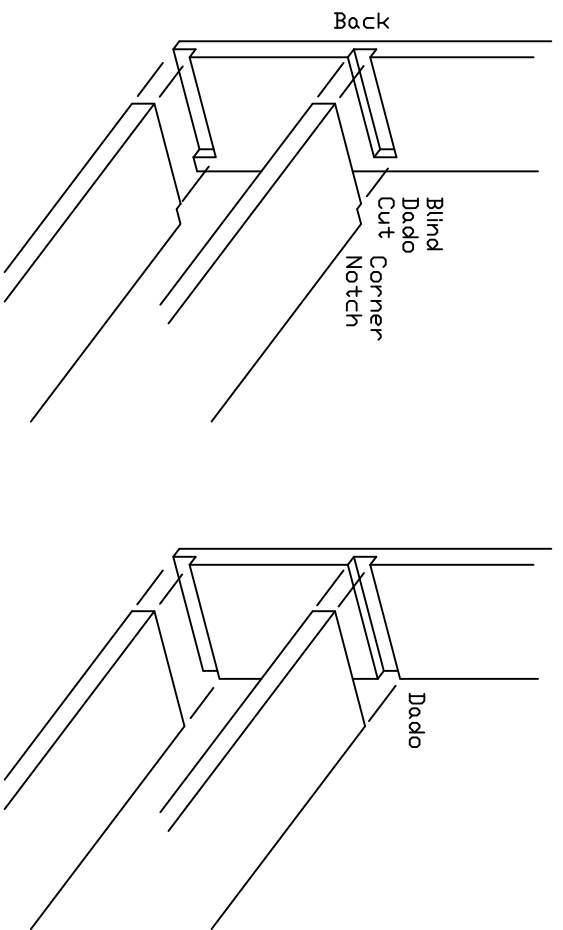


Recommended material: 1 x 6 (3/4" x 5 1/2")
 solid lumber; Pine, Oak, Cherry, or Walnut.
 Medallion material: 1/8" or 1/4" Birch plywood.

WP-603 Gun Rack
23" Wide x 28" High 5 1/2" Deep

This gun rack requires 2 each 1 x 6 x 96" (8) boards to build using your material as listed below.

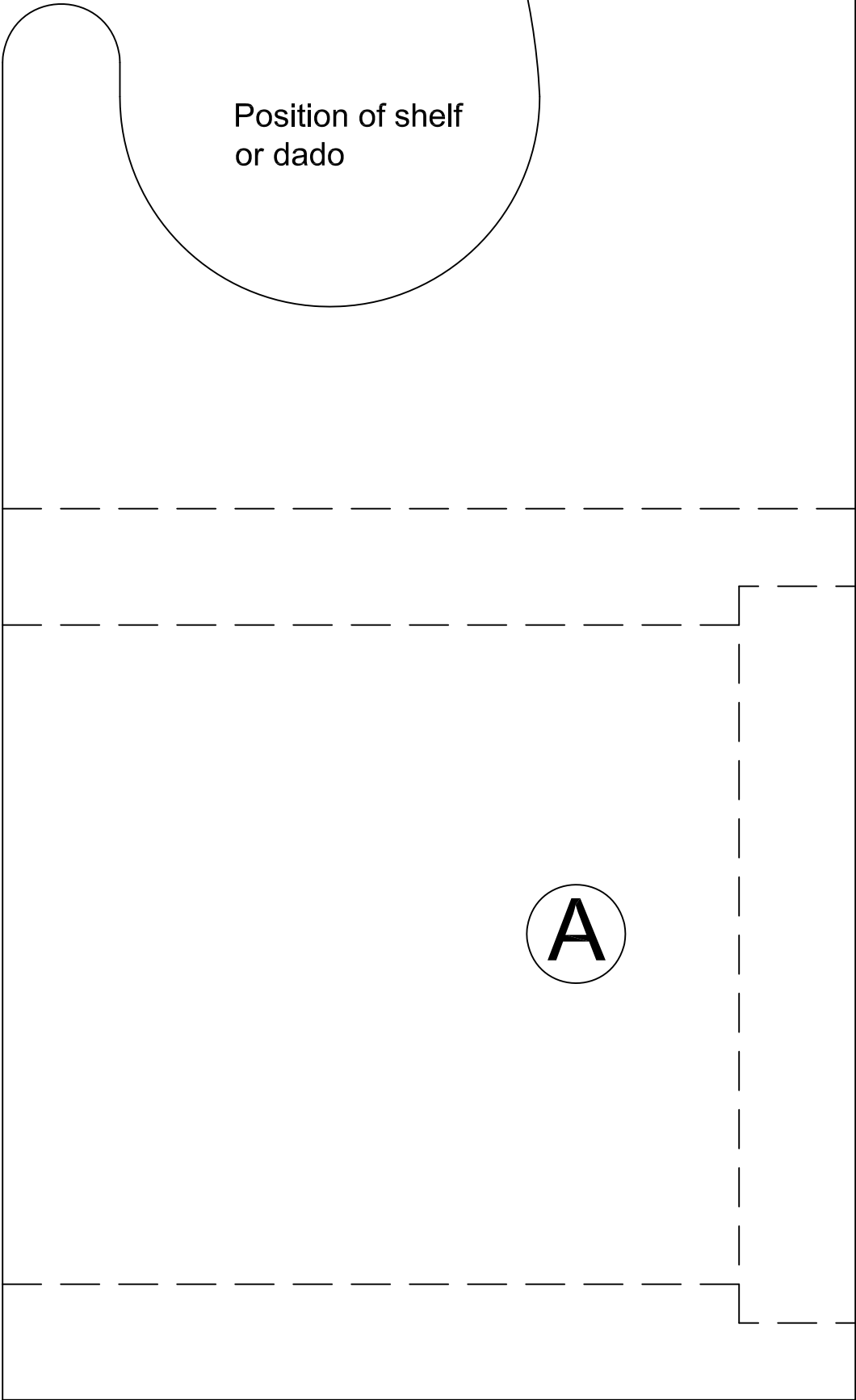
Materials List:			
Quantity	Letter	Name	Size
2	A	Sides	3/4" x 5 1/2" x 28"
1	B	Back (upper)	3/4" x 5 1/2" x 22"
1	C	Back (lower)	3/4" x 4 3/4" x 22"
2	D	Shelves	3/4" x 5 1/2" x 22"
1	E	Shelf Support	3/4" x 4 3/4" x 4 3/4"



These plans have been designed for woodworkers of nearly any skill level to create a beautiful hand crafted wooden gun rack. The simplest construction method is to butt all ends, and screw and glue together.

The gun rack can also be constructed with dados, or using blind dados for a very clean look. No matter your construction method, clamp all components together after gluing.

Match Line — — — — —



Match Line — — — — —

Attach two drawings
using match line
to align.

A

© 2010 Outside the Box Patterns
All Rights Reserved

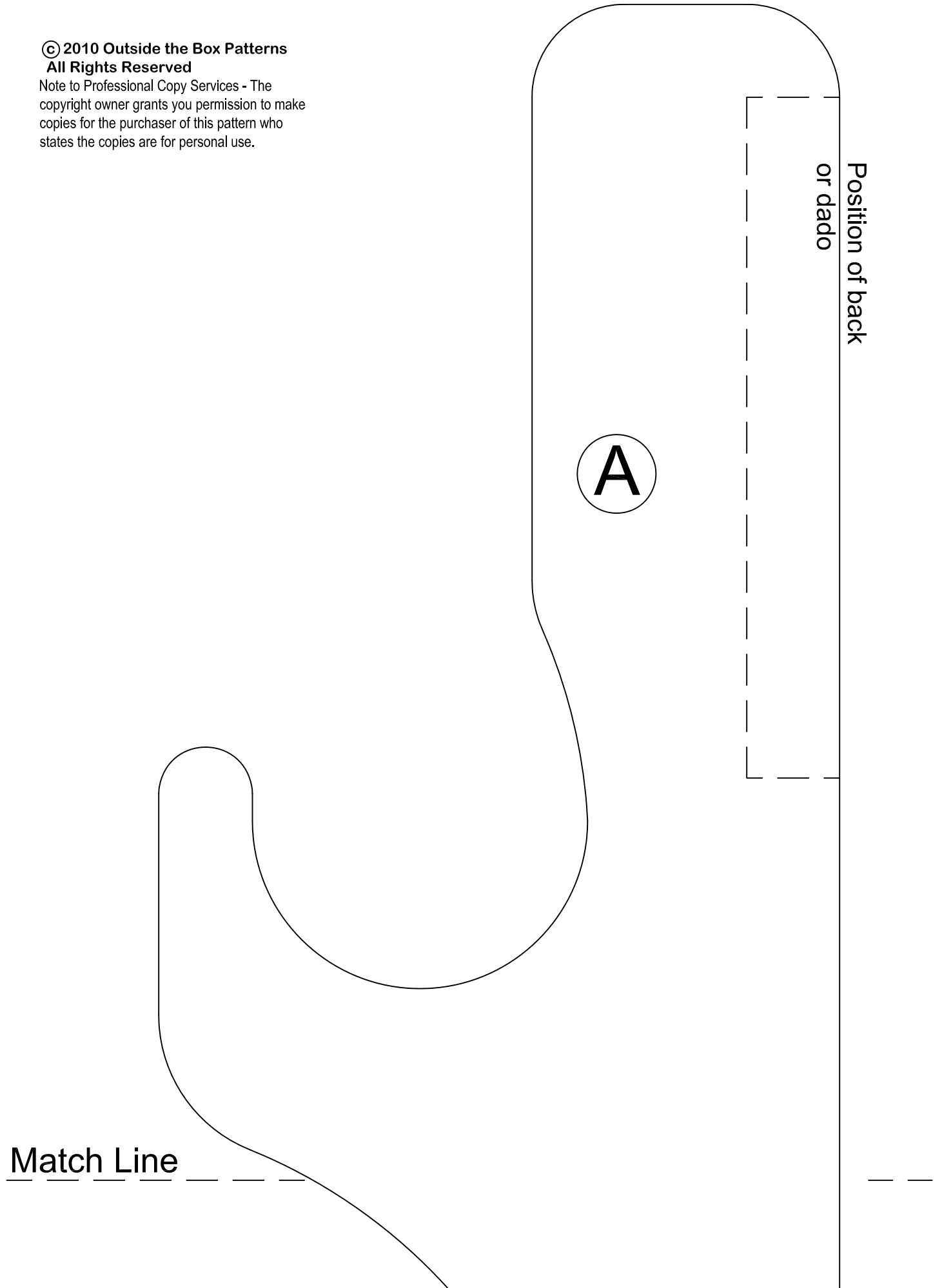
Note to Professional Copy Services - The
copyright owner grants you permission to make
copies for the purchaser of this pattern who
states the copies are for personal use.

Match Line — — — — —



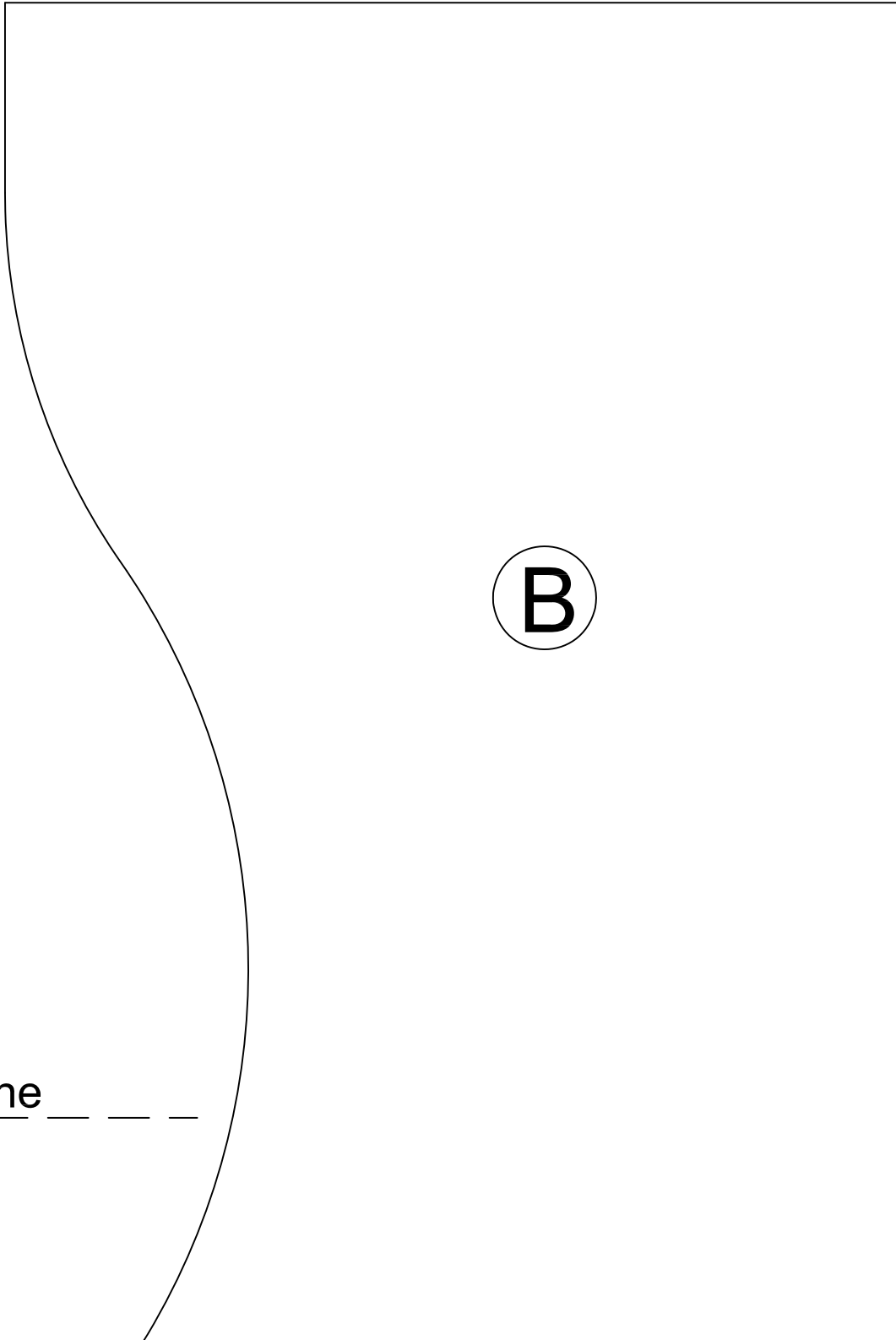
© 2010 Outside the Box Patterns
All Rights Reserved

Note to Professional Copy Services - The
copyright owner grants you permission to make
copies for the purchaser of this pattern who
states the copies are for personal use.



© 2010 Outside the Box Patterns
All Rights Reserved

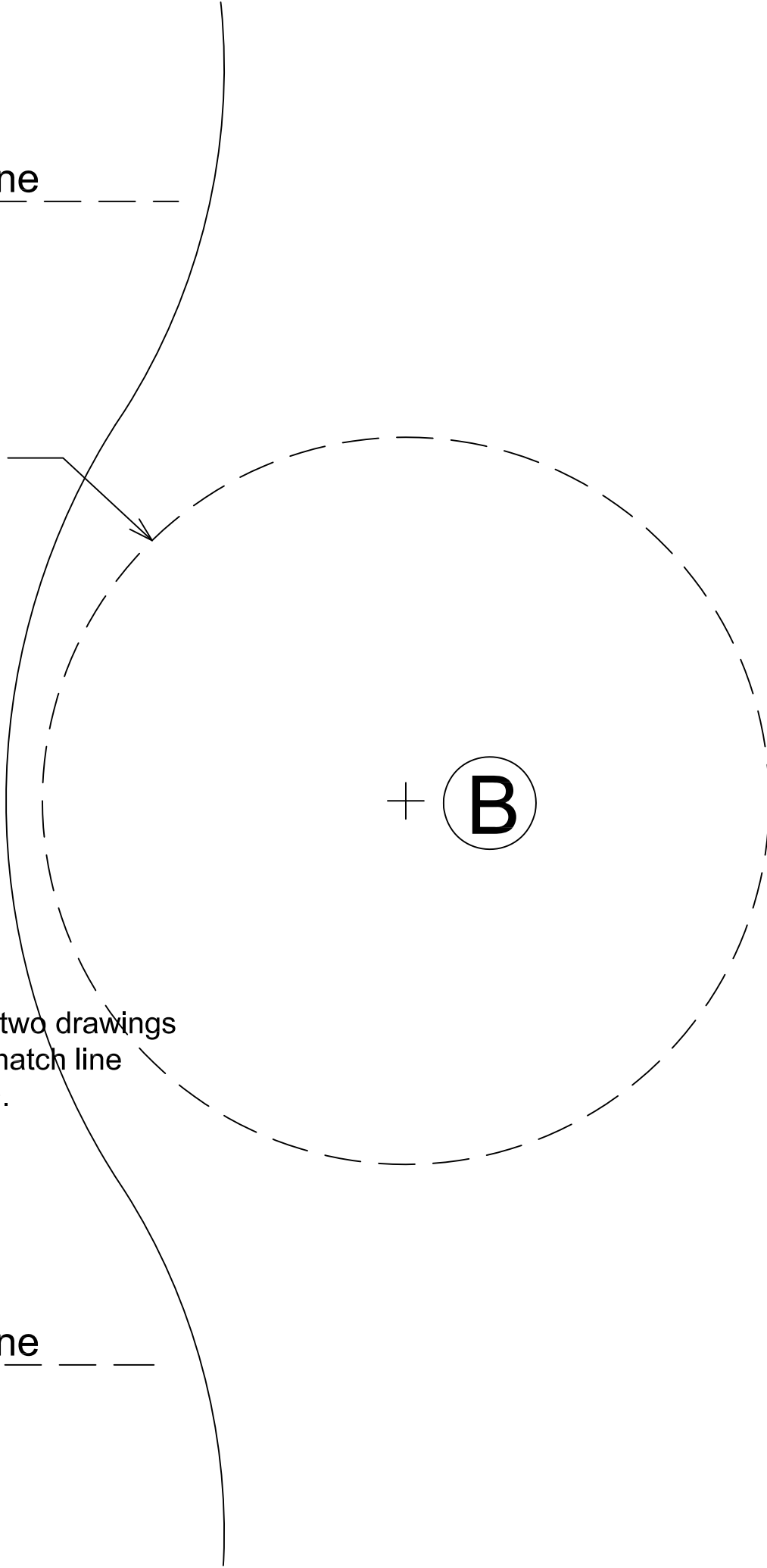
Note to Professional Copy Services - The
copyright owner grants you permission to make
copies for the purchaser of this pattern who
states the copies are for personal use.



Match Line _____

Match Line - - - -

Positioning line for
Duck/Elk Medallion
Ignore if not using.



Match Line - - - -

Match Line — —

— —

B

© 2010 Outside the Box Patterns
All Rights Reserved

Note to Professional Copy Services - The
copyright owner grants you permission to make
copies for the purchaser of this pattern who
states the copies are for personal use.

Elk Medallion

1. Cut from 1/4" or 1/8" x 6" square Birch plywood.
2. Center circle on stock.
3. Drill 1/16" dia. pilot holes to pass blade through stock.
4. Trim edges with razor knife and sand with 150 grit sandpaper.
5. Stain or paint as desired.



© 2009 Outside the Box Patterns
All Rights Reserved

Note to Professional Copy Services - The
copyright owner grants you permission to make
copies for the purchaser of this pattern who
states the copies are for personal use.

Duck Medallion

1. Cut from 1/4" or 1/8" x 6" square Birch plywood.
2. Center circle on stock.
3. Drill 1/16" dia. pilot holes to pass blade through stock.
4. Trim edges with razor knife and sand with 150 grit sandpaper.
5. Stain or paint as desired.



© 2009 Outside the Box Patterns
All Rights Reserved

Note to Professional Copy Services - The
copyright owner grants you permission to make
copies for the purchaser of this pattern who
states the copies are for personal use.