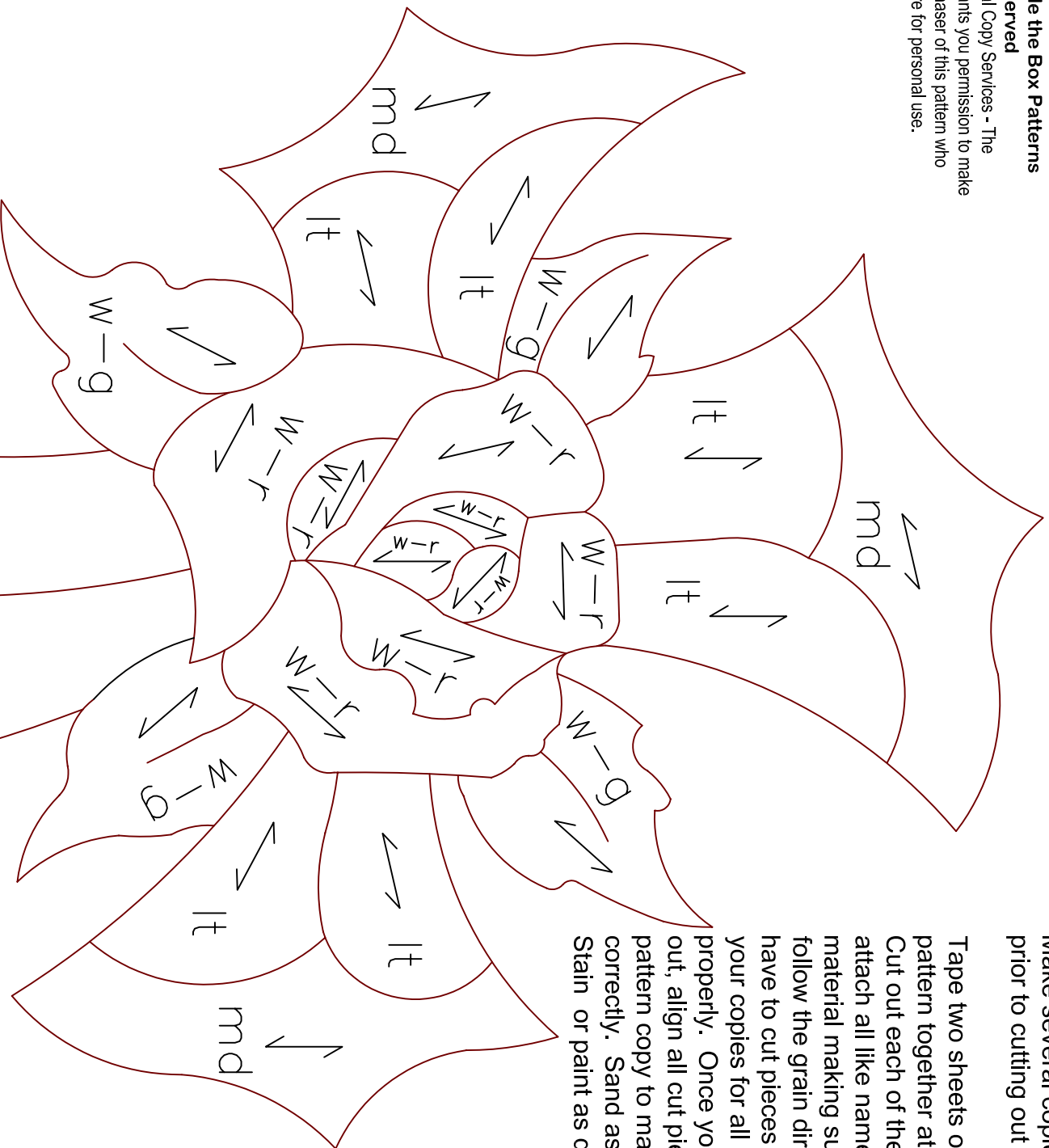


**© 2009 Outside the Box Patterns
All Rights Reserved**

Note to Professional Copy Services - The copyright owner grants you permission to make copies for the purchaser of this pattern who states the copies are for personal use.



Make several copies of this pattern prior to cutting out pattern.

Tape two sheets of your printed pattern together at the match line. Cut out each of the pieces, and attach all like named pieces to your material making sure the arrows follow the grain direction. You may have to cut pieces from several of your copies for all pieces to be cut properly. Once your pieces are cut out, align all cut pieces on an uncut pattern copy to make sure all fit correctly. Sand as required for fit. Stain or paint as desired.

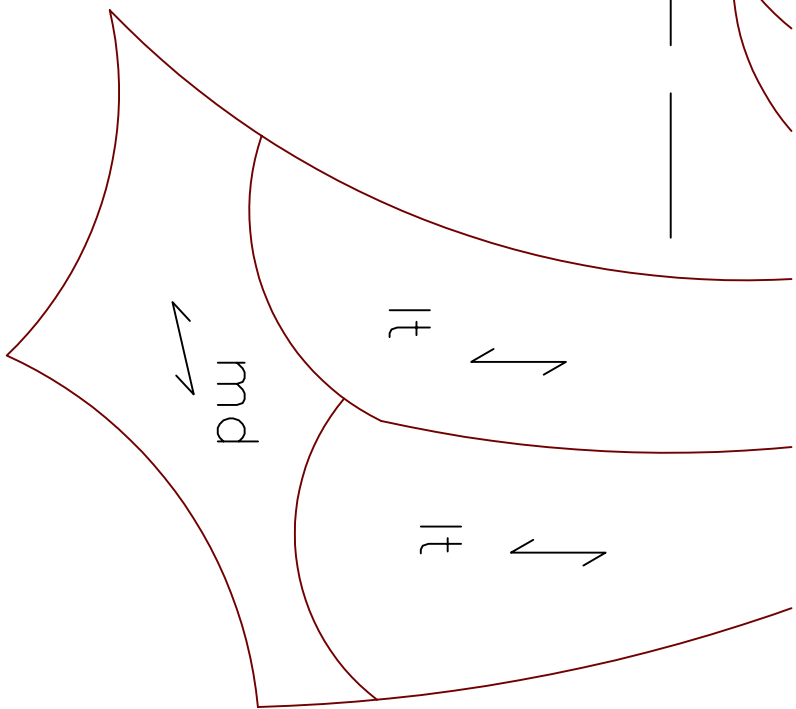
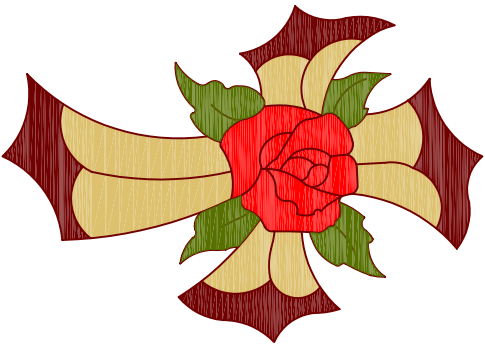
MATCH LINE

MATCH LINE

MATCH LINE



MATCH LINE



WP-753 CrossRose Pattern

This is the perfect learning pattern for anyone just getting into intarsia, and a great pattern for those with experience to use to create simple unique, and beautiful intarsia art objects.

A simple way to use this pattern is to simply glue the pattern to a piece of material about 8" wide, by 12" high, and trace all interior lines onto your material for painting. Use your scroll saw to cut the CrossRose, cutting only the outside outlines. Carefully sand all edges, and paint all interior areas to your taste.

My favorite material to use for this pattern is Western Red Cedar. Many times the best variety of colors can be found in the fence picket pile at your lumber yard. Attach the various pieces of your pattern to your WRC material taking advantage of the color gradations in the wood.

- ↔ = Grain Direction
- lt = Light shade of wood
- md = Medium Dark shade of wood
- w-g = White Pine or any white wood (stain green)
- w-r = White Pine or any white wood (stain red)