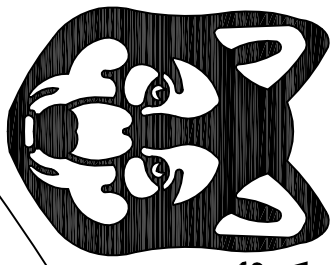


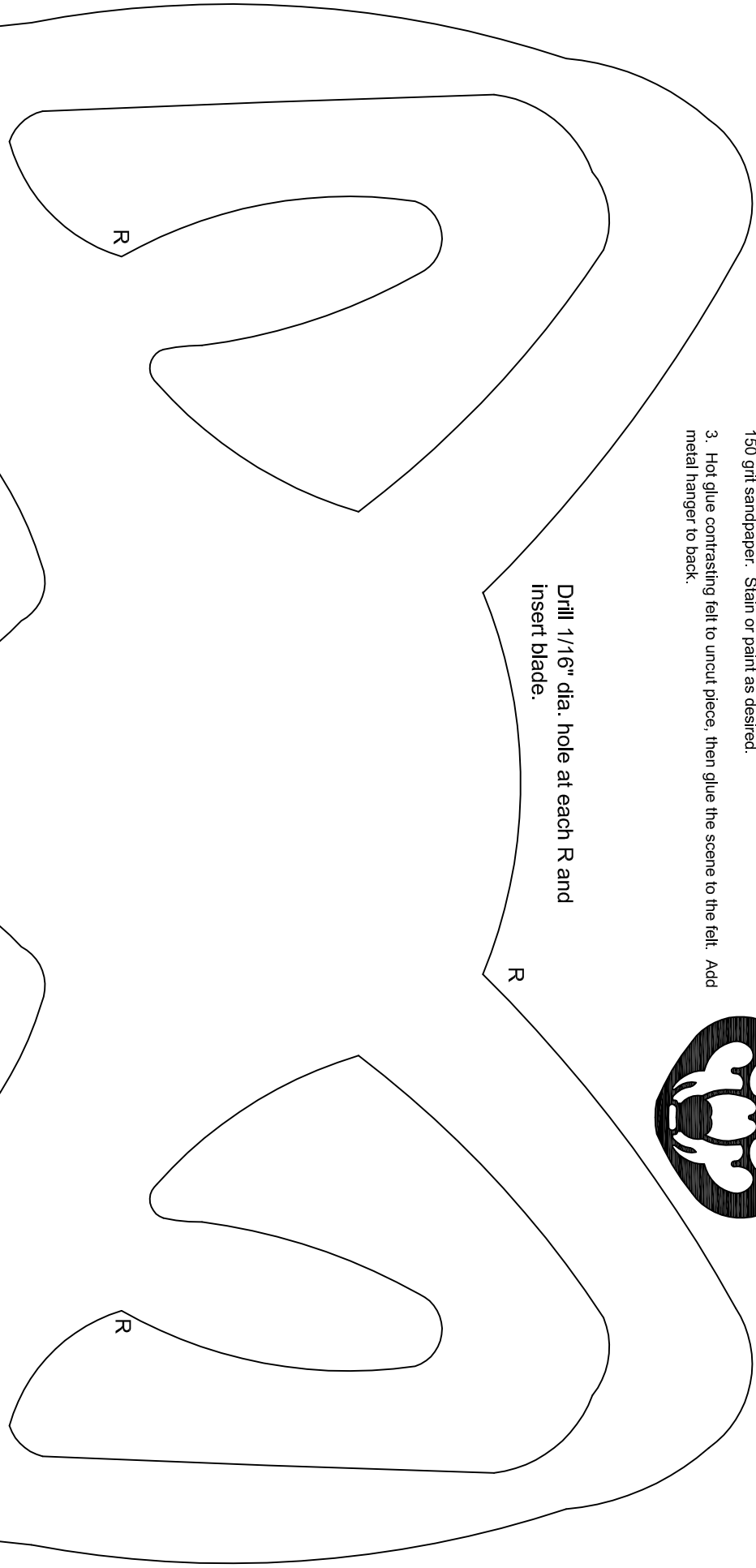
This design is fairly easy, although there are a few places where the material is thin and must be handled carefully. A spiral blade will minimize turning the project.

1. Start with 2 pieces of material at least 11" wide x 14" long.
2. Cut the pattern from one piece. Trim all cuts with razor knife and sand with 150 grit sandpaper. Stain or paint as desired.
3. Hot glue contrasting felt to uncut piece, then glue the scene to the felt. Add metal hanger to back.



**WP-726 HUSKEY
SILHOUETTE PATTERN**

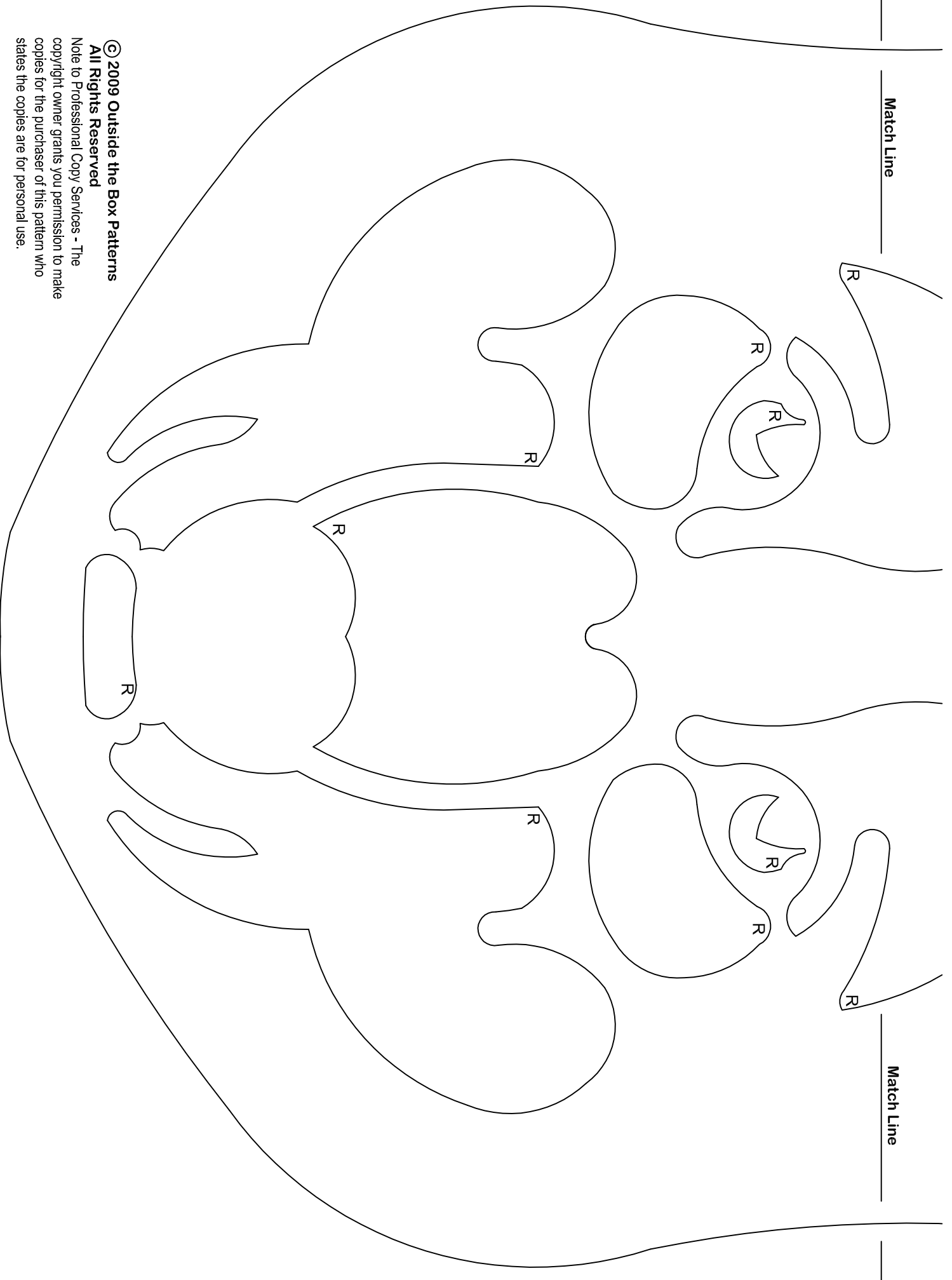
Drill 1/16" dia. hole at each R and
insert blade.



Match Line

Match Line

Match Line



Match Line

© 2009 Outside the Box Patterns
All Rights Reserved

Note to Professional Copy Services - The
copyright owner grants you permission to make
copies for the purchaser of this pattern who
states the copies are for personal use.