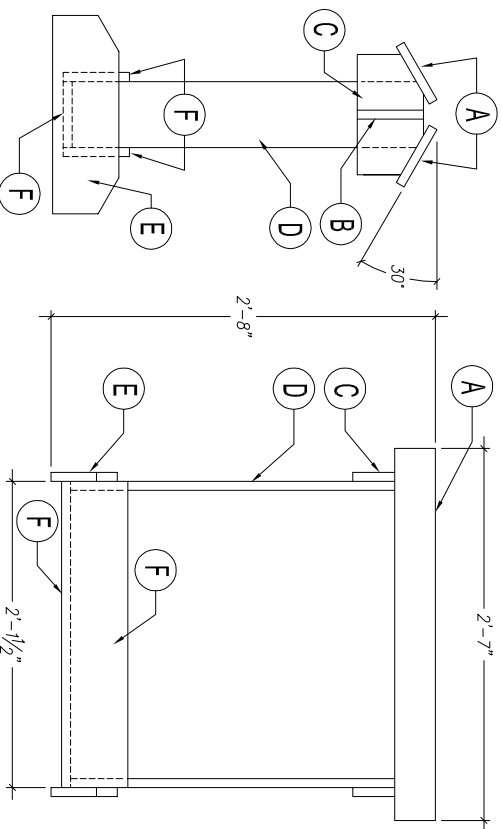


**This project requires 3 each 1 x 6 x 96"  
Material: Pine, Redwood, or Oak. Paint or Stain.**



## END ELEVATION

**SCALE: 3/4" = 12"**

Recommended material: 1 x 6 pine, redwood to paint, oak to stain.

## SIDE ELEVATION

**SCALE: 3/4" = 12"**

Recommended material: 1 x 6 pine, redwood to paint, oak to stain.

### WP-1327 SADDLE STAND

**Please Note:** This is a fairly simple item to build. Please look the plans over carefully prior to cutting your material to gain an understanding of how all parts are cut and used.

If you have any questions, or problems with the plans, please contact me;

Jim Hurt

OTB Patterns

jhurt@otbpatterns.com

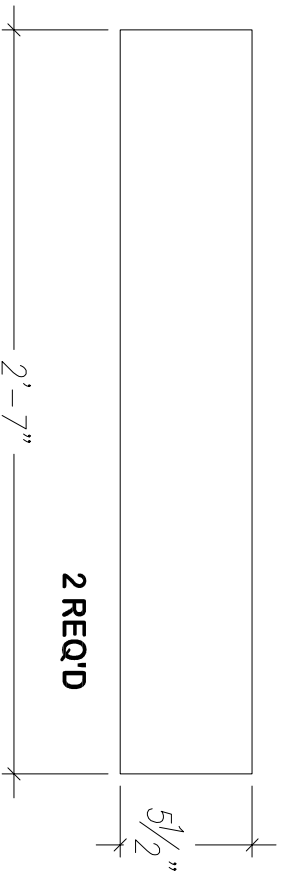
801-425-3790

This saddle stand has been sized to give you the best yield for three (3) 1 X 6 X 96 boards. Changing the size may require additional material.

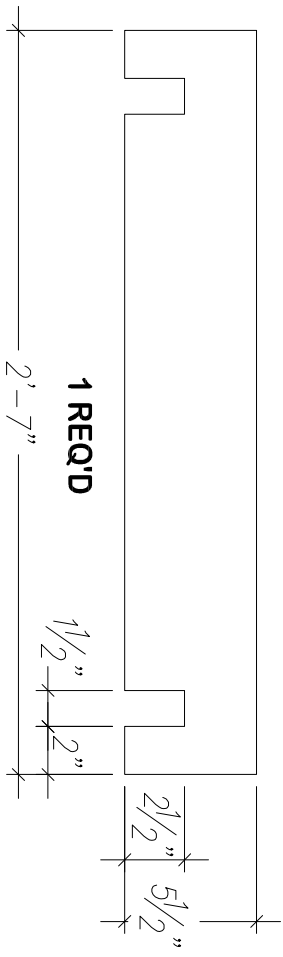
See parts layouts on sheet two for sizes and cuts.

You may adjust height slightly by moving "Floor Support" (Item E) up or down.

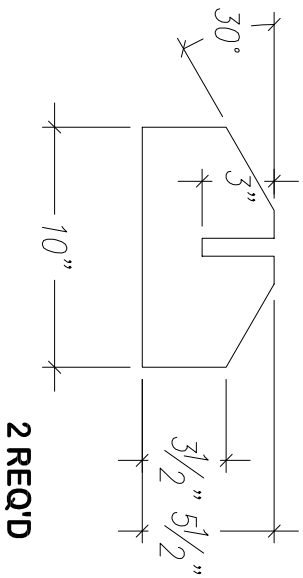
Pre-drill and counter-sink all holes prior to assembling. Make sure all parts are square as you put this saddle stand together.



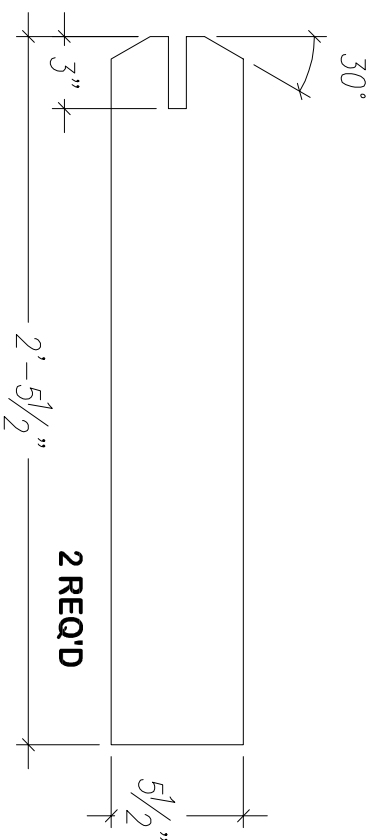
**A** CROSS MEMBER  
SCALE: 1 1/2" = 12"



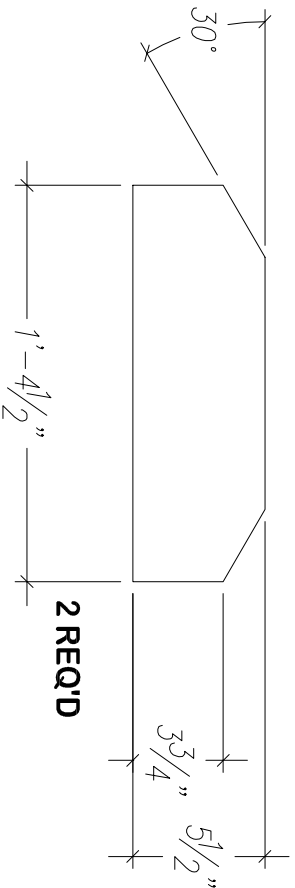
**B** LOCK RAIL  
SCALE: 1 1/2" = 12"



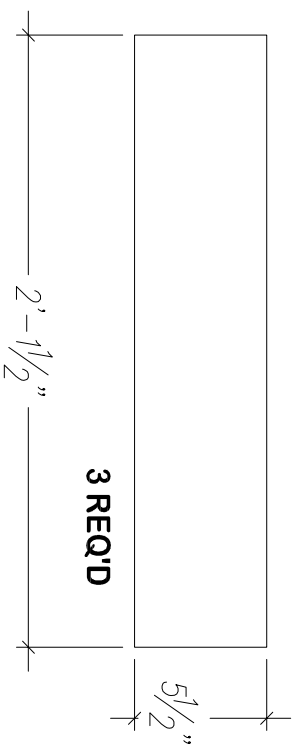
**C** END SUPPORT  
SCALE: 1 1/2" = 12"



**D** VERTICAL LEG  
SCALE: 1 1/2" = 12"



**E** FLOOR SUPPORT  
SCALE: 1 1/2" = 12"



**F** BOTTOM CROSS MEMBER  
SCALE: 1 1/2" = 12"